

Mécanismes  
Antriebe



Mechanisms  
Mecanismos



Meccanismi  
机构



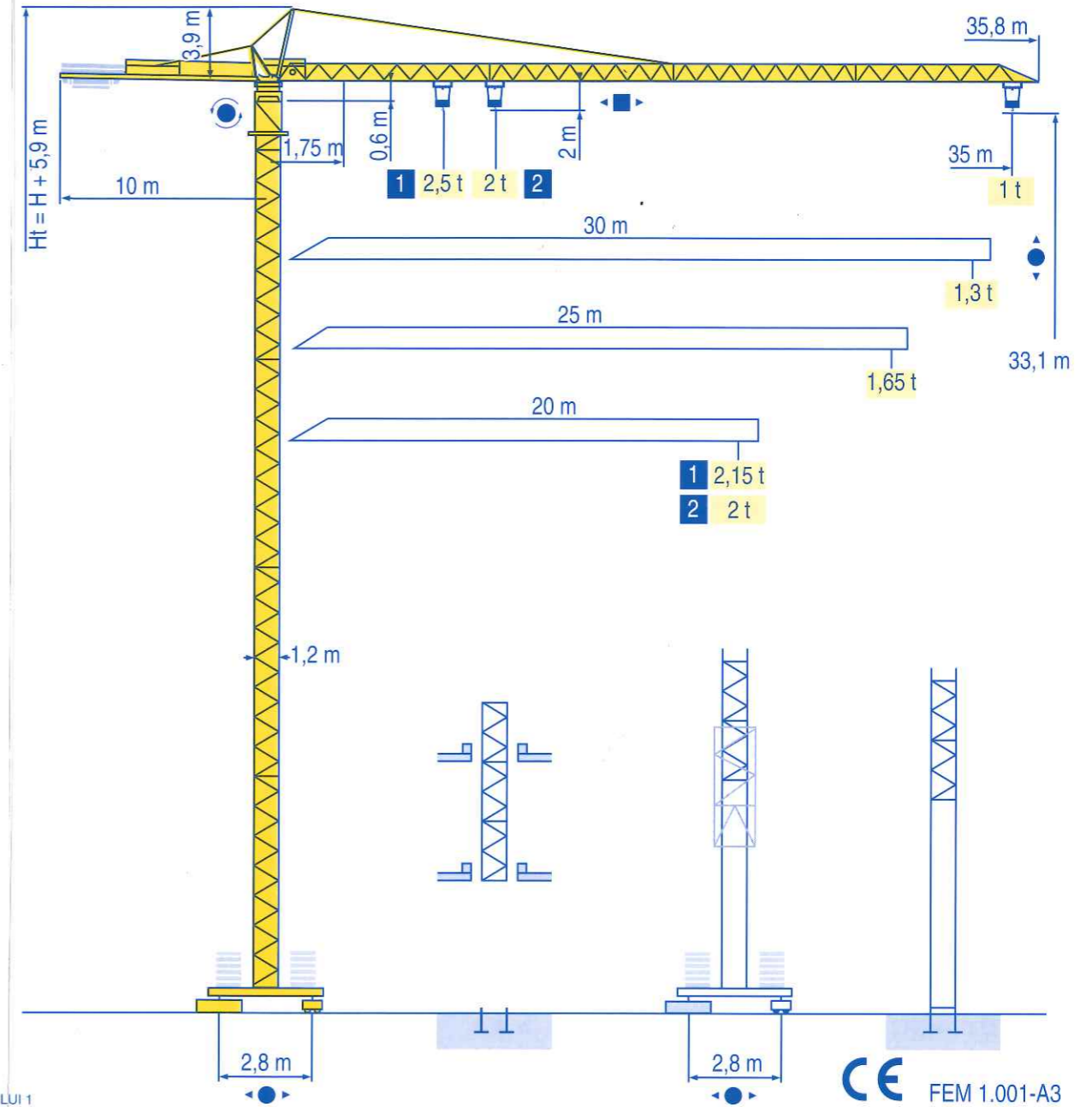
					ch - PS hp	kW	
▲	9 RPC 10	m/min	7	21	42	8,2	6
		t	2	2	1		
●	15 PC 10	m/min	8	25	50	15	11
		t	2	2	1		
▲	15 PC 13	m/min	7	21	42	15	11
		t	2,5	2,5	1,3		
◀ ▶	1 D2 V1	m/min	18 - 36			1,2	0,9
⊙	RCV 40	tr/min U/min rpm	0 → 0,8			6	4,5
⊙	TVD 324	m/min	26			2 x 4	2 x 2,9
CEI 38		IEC 38	kVA		Headphones icon		
400 V (+6% -10%) 50 Hz			9 PC : 15 kVA 15 PC : 20 kVA		84/534 - 87/405		

LUI 2

▲	Levage	F	Hoisting	GB	Sollevamento	I
◀ ▶	Distribution		Trolleying		Distribuzione	
⊙	Orientation		Slewing		Rotazione	
●	Translation		Travelling		Traslazione	
Headphones icon	Conforme aux directives CEE 84/534 et 87/405 sur le niveau acoustique		In compliance with the EEC 84/534 and 87/405 Instructions on noise level		Conforme alle direttive CEE 84/534 e 87/405 sul livello acustico	
▲	Heben	D	Elevación	E	起升	C
◀ ▶	Katzfahren		Distribución		变幅	
⊙	Schwenken		Orientación		回转	
●	Kranfahren		Traslación		行走	
Headphones icon	Gemäss EWG-Richtlinien 84/534 und 87/405 für den Schall-Leistungspegel		Conforme con las directivas CEE 84/534 y 87/405 sobre el nivel acustico		符合 CEE 84/534 - CEE 87/405 声响应度规定	

Subject to modification / Modifications réservées / Änderungen vorbehalten / Printed in France

# CITY CRANE MC 48 B



LUI 1

Igo  
HD  
HDM



HDT



GTMR



CITY CRANE



TOPKIT MD  
MAXI MD



MAXI TOPKIT



Topless MDT



MR



**SABER SRL**

Via Valeriana, 54 - 23019 TRAONA (SO)  
Tel. 0342/65.24.44 - Fax 0342/65.22.46

**POTAIN**  
GRUPE LEGRIS INDUSTRIES

18, Rue de Charbonnières, B.P. 173  
F-69132 ECULLY Cedex  
Tél. (33)04.72.18.20.20  
Fax (33)04.72.18.20.00  
http://www.potain.com  
E-mail : mkt@potain.fr

**CITY CRANE MC 48 B**

Copyright.Reproduction interdite © POTAIN 2000

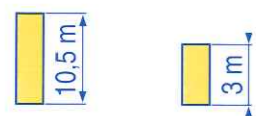
**Deutschland**  
POTAIN GmbH  
Tel : 06.105.704.0  
**Italia**  
POTAIN S.p.A.  
Tel : 0.331.49.33.11  
**Singapore**  
POTAIN PTE LTD  
Tel : (00.65) 227.1550

Réf. 2000.36 LUI 2

Realisation HeadLines

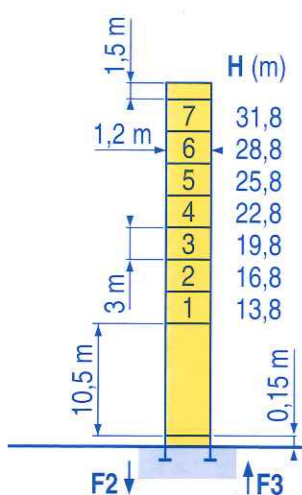


**POTAIN**



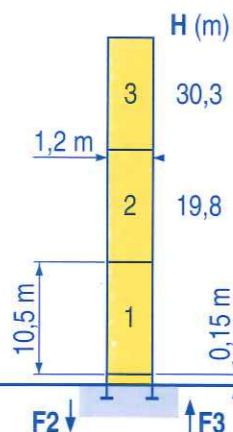
∅ 1,2 m

20 m → 35 m



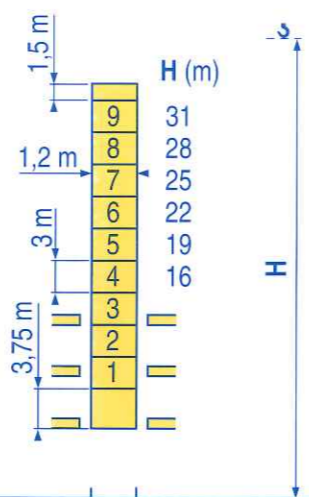
P 12 B

F2 ● 41 t ■ 66 t  
F3 ● 30 t ■ 57 t  
▲ 14 t

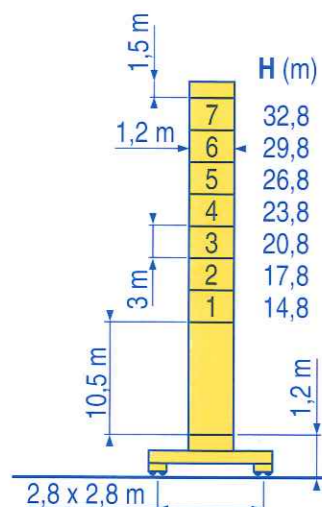


P 12 B

F2 ● 37 t ■ 55 t  
F3 ● 28 t ■ 47 t  
▲ 11 t

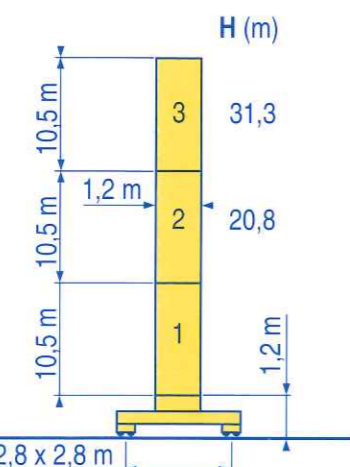


B 122 A / P 12 B



ZK 12 B

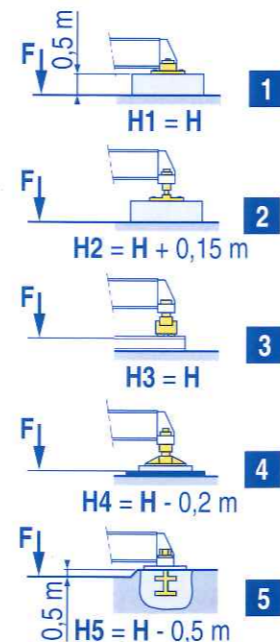
F1 ● 37 t ■ 54 t  
▲ 17 t



ZK 12 B

F1 ● 34 t ■ 45 t  
▲ 14 t

ZK



LUI 2

● Voir télescopage sur dalles  
● Réactions en service  
■ Réactions hors service  
▲ A vide sans lest (ni train de transport) avec flèche et hauteur maximum.

F

See climbing crane  
Reactions in service  
Reactions out of service  
Without load, ballast (or transport axles), with maximum jib and maximum height.

GB

Consultare gru in cavedio  
Reazioni in servizio  
Reazioni fuori servizio  
A vuoto, senza zavorra (ne assali di trasporto) con braccio massimo e altezza massima.

I

● Siehe Kletterkrane im Gebäude  
● Reaktionskräfte in Betrieb  
■ Reaktionskräfte außer Betrieb  
▲ Ohne Last, Ballast (und Transportachse), mit Maximalausleger und Maximalhöhe.

D

Veja grua trepadora  
Reacciones en servicio  
Reacciones fuera de servicio  
Sin carga, sin lastre, (ni tren de transporte), flecha y altura máxima.

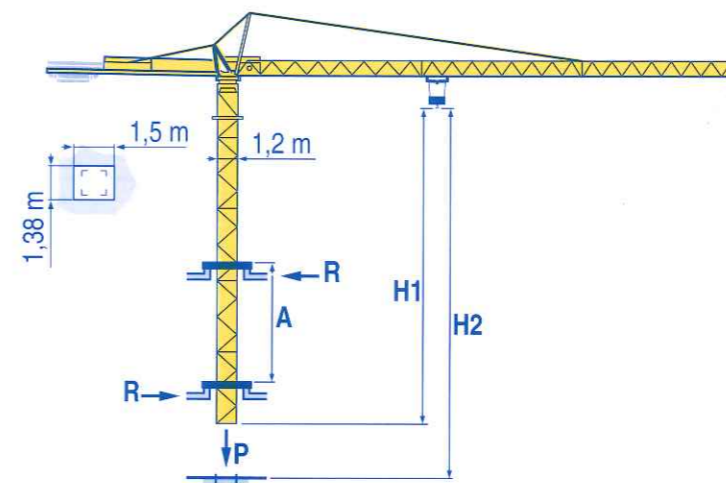
E

见楼板顶升  
工作状态下的反应  
非工作状态下的反应  
空载无压重也无运输车  
有吊臂和最大高度

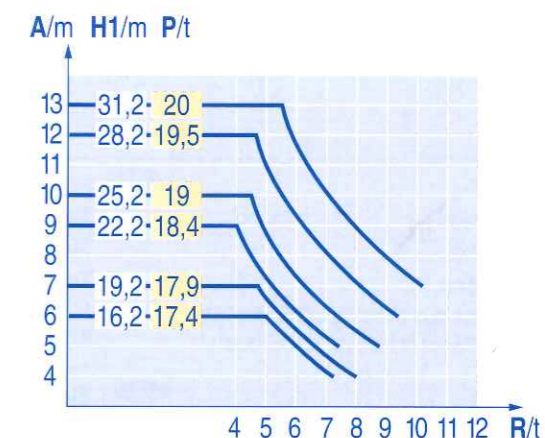
C

Height (m)	Reaction	1,75 m	2,5 m	3,0 m	3,75 m	4,5 m	5,25 m	6,0 m	6,75 m	7,5 m	8,25 m	9,0 m	9,75 m	10,5 m
35 m	●	16,4	19,8	20	22	25	27	30	32	35	m			
35 m	▲	2,5	-	1,98	1,77	1,52	1,38	1,22	1,12	1	t			
30 m	●	17,3	20	20,9	22	25	27	30	m					
30 m	▲	2,5	2,1	-	1,89	1,62	1,48	1,3	t					
25 m	●	17,5	20	21,2	22	25	m							
25 m	▲	2,5	2,15	-	1,92	1,65	t							
20 m	●	17,6	20	m										
20 m	▲	2,5	2,15	t										

LUI 1



LUI 1



A Distance entre cadres  
H1 Hauteur grue  
P Poids de la grue (en service)  
R Réaction horizontale

F

Distance between collars  
Crane height  
Crane weight (in service)  
Horizontal reaction

GB

Distanza fra i telai  
Altezza gru  
Peso della gru (in servizio)  
Reazione orizzontale

I

A Abstand zwischen den Rahmen  
H1 Kranhöhe  
P Krangewicht (in Betrieb)  
R Horizontalkräfte

D

Distancia entra marcos  
Altura grúa  
Peso de la grúa (en servicio)  
Reaccion horizontal

E

各附着框之间距离  
工作状态下塔机高度  
工作状态下塔机重量  
水平反力

C